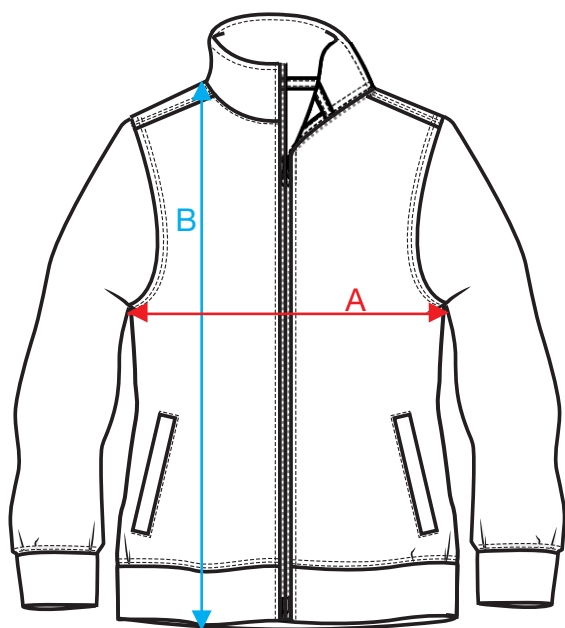
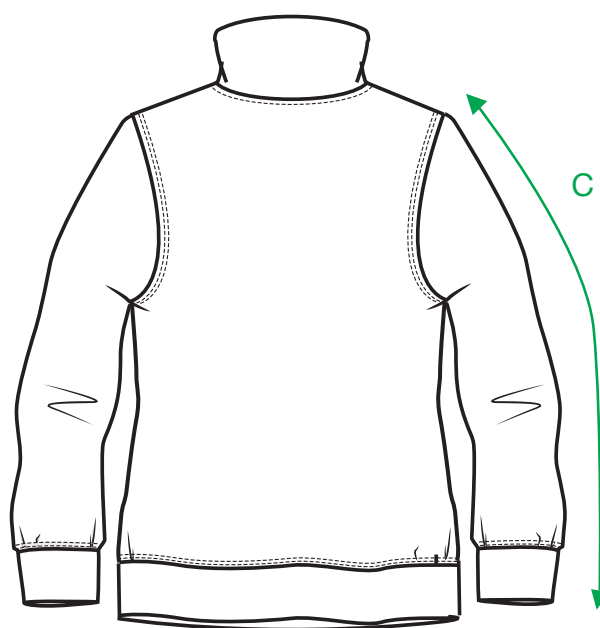


MEASUREMENT SHEET/SIZE SPEC

021039 BASIC CARDIGAN LADIES



FRONT



BACK

MEASUREMENT IN CM	XS/34	S/36	M/38	L/40	XL/42	XXL/ 44
A - 1/2 CHEST	44	47	50	55	60	65
B - BODYLENGTH FRONT HPS	59	61	63	65	67	71
C - SLEEVELENGTH	59	60,5	62	63,5	65	66,5

Sizing chart is in centimeters and sizing is subject to a market accepted tolerance. No rights may be derived from this sizing chart.

